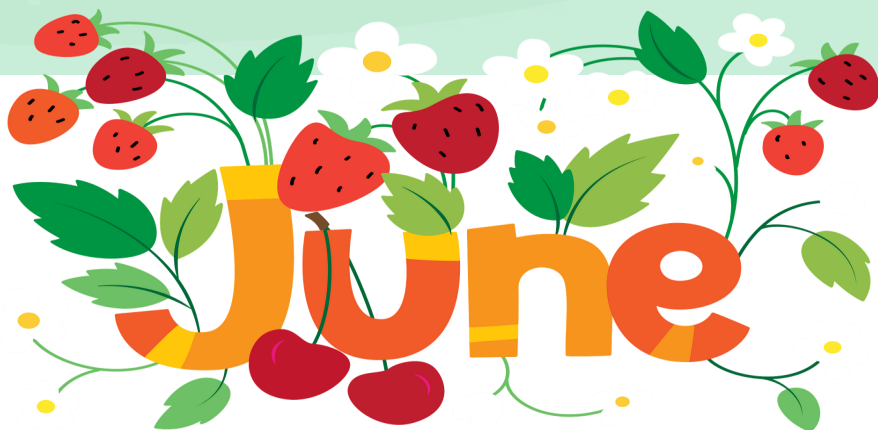




Judith Basin County
4-H Newsletter
June 2021



Fair Entry is OPEN!!

*Please get your 2021 Judith Basin County Fair entries done by **July 1st!!!***

*Go to www.fairentry.com and search Judith Basin County Fair, and use the **GREEN 4HOnline** Button to sign in.*

Step by step directions included!

Cover Contest Winner

Congrats to Lauren Deegan!!

Winner of the 7th Annual JBC Fair Book Cover Contest!

For her efforts, Lauren has won a \$40 Gift Card to North 40 in Great Falls!

Newsletter Scavenger hunt!!

For June we are going to look for a cool sun!

When you find the sun, shoot me an email hannah.marquardt@montana.edu and stop by the office to pick up your treat!
Here's the cool sun to look out for!



Dates to Remember:

Geyser Lucky Clovers:
June 17th, 2021
6:00 PM

Utica Sapphires:
July 19th, 2021
Project Tour at 1:00 PM
Meeting and BBQ at
Ackley after

Stanford Scramblers
June 6th, 2021
7:00 PM
JBC Fairgrounds

4-H Council Meeting
July 7th
6:30 PM
Extension Office

Judging Contest
June 3rd
12:00 PM
JBC Fairgrounds

2021 Multi-County 4-H
Camp
June 29th - July 2nd
Camp Rotary

Montana 4-H Congress
July 13th - 16th, 2021
MSU Bozeman
Campus

JB County Fair Entries
Due
July 1st, 2021



Like "MSU Judith Basin Extension"

Katie Hatlelid
MSU Extension
Judith Basin County
PO Box 427
Stanford, MT 59479
(406) 566-2277 ext. 104

Hannah Marquardt
Administrative Assistant
judithbasin@montana.edu
www.judithbasin.msuextension.org
(406) 566-2277 ext. 105



MONTANA
STATE UNIVERSITY

EXTENSION

4-H Resources

The MSU Extension Judith Basin County Website is up to date and a great place to find information for 4-H, AG, and HR related subjects!

Be sure to Check it out!

[https://
judithbasin.msuextension.org/](https://judithbasin.msuextension.org/)

Another great resource is:

<http://montana4h.org/>

4-H Junior Camp

Camp Rotary

June 29th - July 2nd

Montana 4-H Congress

July 13th - 16th, 2021

MSU Bozeman Campus

Registration for 4-H

Congress will be done through ZSuites this year.

**Registration deadline is June 18th,
2021**

"We won't be sleeping in tents or cabins, but we will be focusing on all the things that make 4-H Camp great, like being outdoors, friendship, and getting to know people, fun food, and just spending time together with your 4-H peers."



Judith Basin Horse Clinic

Dates

Ranch Horse Practice

Monday June 21st

Monday June 28th

Monday July 5th

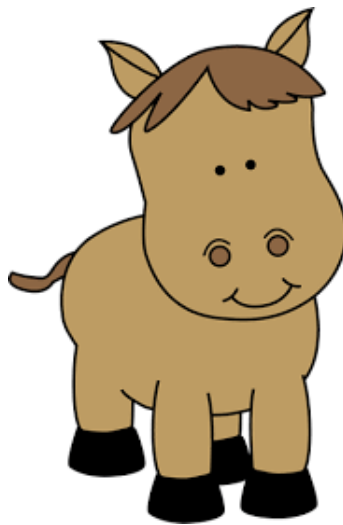
Monday July 12

****All Practices are 6:00 PM at
Erickson Arena**

Monday, July 26th and August 2nd,
2021

****Horse Assessments/Fair
Pattern Practice**

**Horse project kids must
attend at least one
assessment date!!!**



Judith Basin Dog Clinic Dates

Thursday July 8th

Thursday July 22nd

****4-6 PM at Erickson's with Jessica
Horan**

Thursday August 5th

****4-6 PM at JBC Fairgrounds with
Jessica Horan**

Utica Sapphire 4-H Club Summer Meeting/Project Tour

Monday July 19th

Project Tour at 1:00 PM

Meeting and BBQ at Ackley After

Family Entry

Important Reminders

- Your fair probably has dates when entry is accepted into the fair. Be sure to complete your entry (including the final "Submit" step) prior to the cut-off date.
- Recommended browsers: Google Chrome or Mozilla Firefox. Older versions of Internet Explorer may cause unexpected results.
- Register all entries for each exhibitor in the family before proceeding to the Payment section.
- Be sure to click the "Submit" button when you have completed your entries. Entries are not final until they have been submitted.
- Check your email inbox for a confirmation email with a list of your entries and any related fees.
- You will receive a second email when your entries have been approved by your fair.

Steps

1. Go to <http://www.fairentry.com> and click "Find Your Fair".



2. Filter by your state, click Search, and then click on the correct fair.

Search by Keyword – Judith Basin



3. Sign in with 4HOnline

You have a 4HOnline log in, click on the green button and enter it here.



4. Click "Register an Exhibitor"

Exhibitor Information

5. Click on Individual

6. Choose the member you wish to register

7. Answer the Food Booth Schedule & Setup questions and continue

8. Review your exhibitor information. If any information is incorrectly, click the green Edit button in the appropriate group to change it. When all information is correct, click Continue to Entries.

Creating Entries

Each exhibitor can have multiple entries. One entry must be made for each item, animal, class, etc. For example, if an exhibitor is bringing 2 photographs, two entries into the photography class must be created. If an exhibitor is showing one horse in 5 events, five class entries must be created. Once all entries have been created for the first exhibitor, you have the choice of creating another exhibitor in this family (and entries) or proceeding to check-out (submitting the entries, whether or not fees are charged).

1. Click Add an Entry beside the correct exhibitor.



2. Click Select beside the first department you wish to enter. Any departments that are not available for entry will be noted as "Not Available" with a short explanation.
3. After you select a department, you will see a list of divisions to select from, and then a list of available classes. *Also notice that there are blue "Change" links in case you mistakenly select an incorrect department, division, or class.*
4. *You may check multiple classes in a Division at the same time!*

5. If this is an **animal class entry**, you will be required to specify which animal will be exhibited in this class. You will see the option to "Add animal".
6. "Add animal from Scratch". Fill in all of the fields with information about the animal you intend to exhibit. Click Create and Add Animal when finished.
7. If the animal information was entered incorrectly, you have the option to either Remove From Entry (creating a new animal) or Edit Animal Details. When it's correct, click Continue.

8. The Review screen allows you to double check this entry for accuracy, and make any changes necessary. When the information is correct, click Continue and that class entry is complete.

Review your selections

Before we actually create your entries, please review your selections.

If you continue with your current selections, 1 entries will be created with the following information:

Department	2017 Judith Saxe County Fair
Division	Brot
Club	Stanford Scramblers 44
Animal(s)	17 101

Entry Classes

1. 9L04 and over

[Cancel](#) [Create Entries](#)

9. When each class entry is complete, you have 3 choices for what to do next:
- If all class entries have been completed for one exhibitor, you can **Register another Exhibitor** in this family.
 - If this exhibitor has more class entries to make, you can **Add another Entry for this Exhibitor**.
 - If all entries for all exhibitors in the family have been completed, **Continue to Payment** to finalize and submit your entries.

Exhibitors **Entries** **Payment** \$2.00

Helpsheet, Becky
8/10/2010
#2945

What do you want to do next?

[+ Register another Exhibitor](#)

[+ Add another Entry for this Exhibitor](#)

[+ Continue to Payment](#)

10. Review your entries for completeness and accuracy. *Notice the Summary and Detail buttons at the top of the list on the right.* If there are errors, click on the green Entries section at the top of the page. Click Continue when all information is correct.

Exhibitors **Entries** **Payment** \$2.00

1 Review 2 Payment Method 3 Confirm

Invoice [Summary](#) [Detail](#)

Individual Exhibitor: Becky Helpsheet

Exhibitor Fee \$2.00

Entry #265: Food and Nutrition / Cooking 101 / One loaf banana bread

Total: \$2.00

[Continue](#)

11. There is no payment due, so click Continue

12. Read the information in the “After you Submit” section. You may also have to check a box to “Agree to Terms”. Click Submit to finalize the entries for the exhibitors in this family.

13. ***After you click Submit, no changes are possible to these entries.***

14. ***Enter all exhibitors before you click Submit.***

IMPORTANT INFORMATION INSIDE!!

Courthouse
P.O. Box 427
Stanford, MT 59479

MSU EXTENSION JUDITH BASIN COUNTY



happy
FATHER'S
day

4-H: The Youth Development Program of MSU Extension

The MSU Extension Service is an ADA/EO/AA/Veteran's Preference Employer and Provider of Educational Outreach.